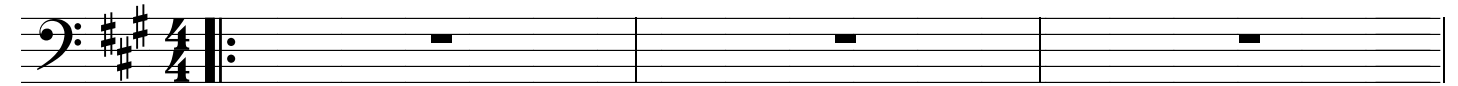


You Dont See Me, Al Jarreau, 1975



Abraham Laboriel, bass

31 32 33

Staff 31-33: Bass clef, key signature of two sharps (F# and C#). Staff 31 contains eighth and sixteenth notes. Staff 32 continues with eighth notes. Staff 33 features a whole note G3.

34 35 36

Staff 34-36: Bass clef, key signature of two sharps. Staff 34 has a whole note G3. Staff 35 has a whole note G3. Staff 36 has eighth notes and a quarter rest.

37 38 39

Staff 37-39: Bass clef, key signature of two sharps. Staff 37 has eighth notes and a quarter rest. Staff 38 has eighth notes and a quarter rest. Staff 39 has eighth notes and a quarter rest.

40 41 42

Staff 40-42: Bass clef, key signature of two sharps. Staff 40 has eighth notes and a quarter rest. Staff 41 has eighth notes and a quarter rest. Staff 42 has eighth notes and a quarter rest.

43 44 45

Staff 43-45: Bass clef, key signature of two sharps. Staff 43 has eighth notes and a quarter rest. Staff 44 has eighth notes and a quarter rest. Staff 45 has eighth notes and a quarter rest.

46 47 48

Staff 46-48: Bass clef, key signature of two sharps. Staff 46 has eighth notes and a quarter rest. Staff 47 has eighth notes and a quarter rest. Staff 48 has eighth notes and a quarter rest.

49 50 51

Staff 49-51: Bass clef, key signature of two flats (Bb and Eb). Staff 49 has eighth notes and a quarter rest. Staff 50 has eighth notes and a quarter rest. Staff 51 has eighth notes and a quarter rest.

52 53 54

Staff 52-54: Bass clef, key signature of two flats. Staff 52 has eighth notes and a quarter rest. Staff 53 has eighth notes and a quarter rest. Staff 54 has eighth notes and a quarter rest.

55 56 57

Staff 55-57: Bass clef, key signature of two flats. Staff 55 has eighth notes and a quarter rest. Staff 56 has eighth notes and a quarter rest. Staff 57 has a quarter rest, followed by a key signature change to two sharps and a whole note G3.

58 59 60

Staff 58-60: Bass clef, key signature of two sharps. Staff 58 has a whole note G3. Staff 59 has a whole note G3. Staff 60 has a whole note G3.

Abraham Laboriel, bass

91 92 93 94 95 96 97 98 99 100

The image displays a musical score for bass, consisting of four staves. The key signature is three sharps (F#, C#, G#) and the time signature is 3/4. The notation includes eighth and sixteenth notes, rests, and slurs. The first staff (measures 91-93) features a rhythmic pattern of eighth notes. The second staff (measures 94-96) includes sixteenth-note runs and eighth notes. The third staff (measures 97-99) continues with eighth notes and sixteenth-note patterns. The fourth staff (measure 100) shows a final melodic phrase ending with a double bar line.

* Only For Educational Purpose